

## What are Health Centers and Who do They Serve?

Health centers are consumer-driven and patient-centered organizations that serve as a comprehensive and cost effective primary health care option for America's most underserved communities. Health centers serve everyone regardless of ability to pay or insurance status. They increase access to health care and provide integrated services based on the unique needs of the communities they serve, delivering value to and having a significant impact on America's health care system.

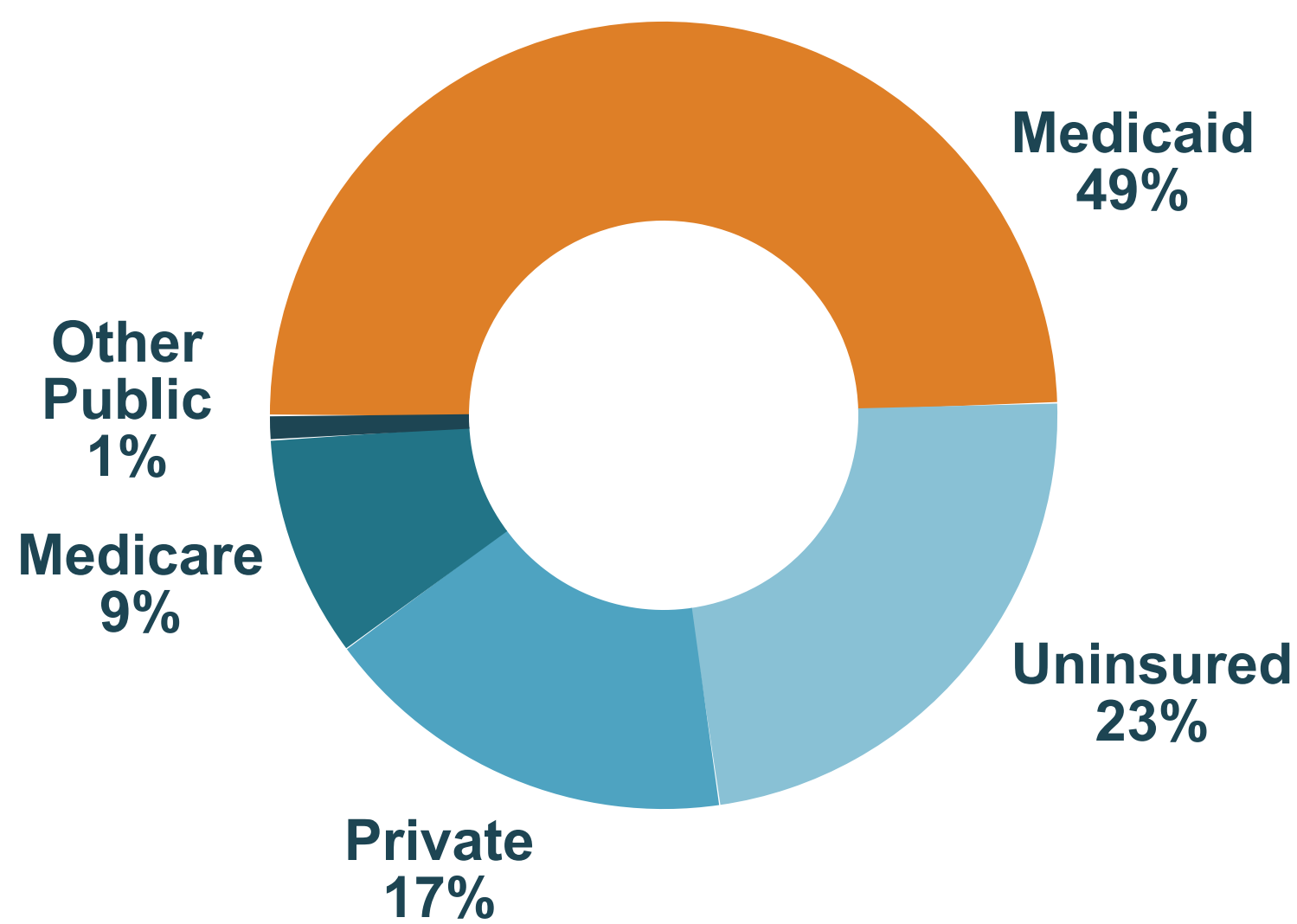
Over **27 million** patients served, including:

over **330,000** veterans

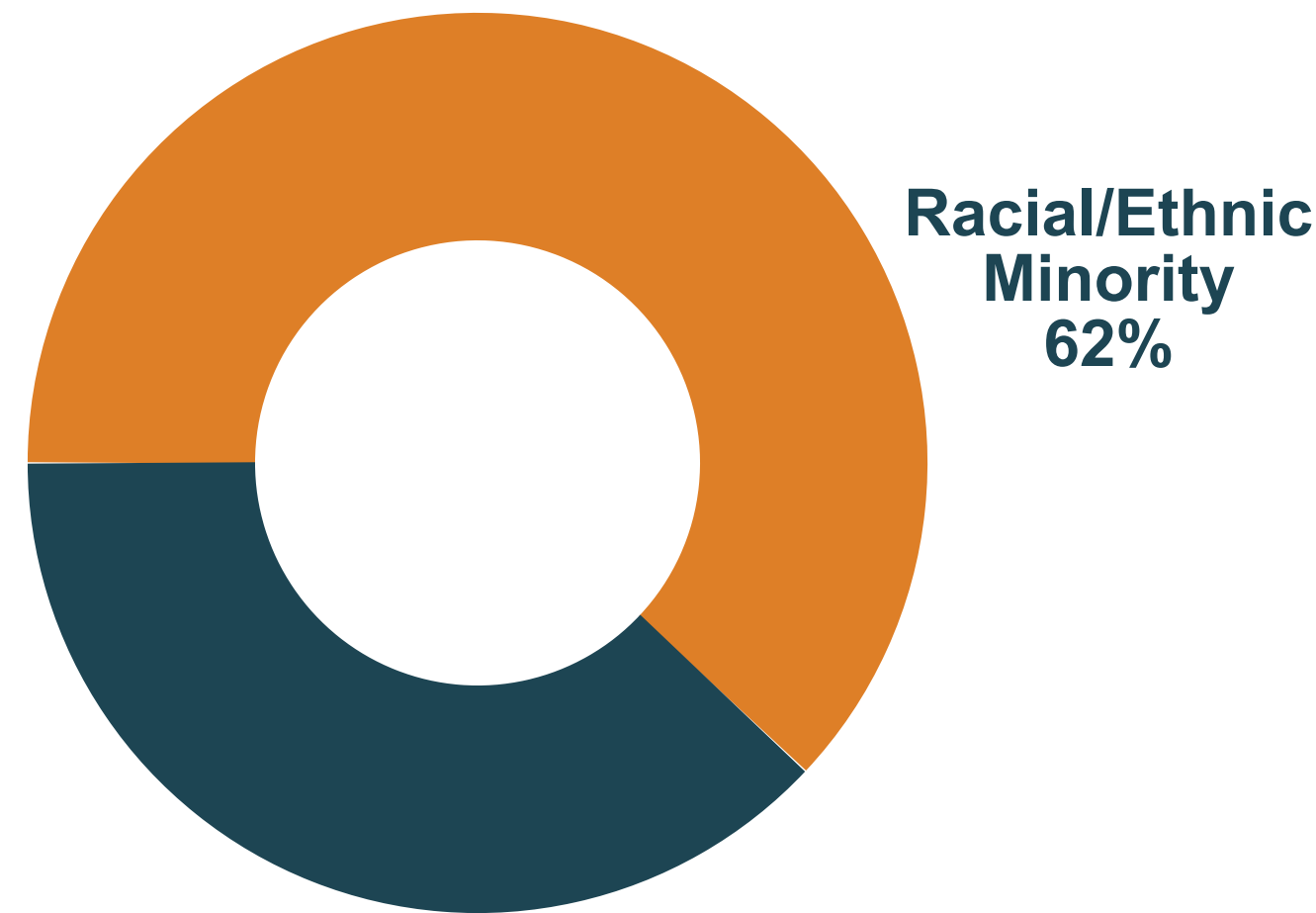
nearly **1.3 million** homeless patients

over **955,000** migrant farmworkers

Most Health Center Patients are Uninsured or Publicly Insured (2016)



Most Health Center Patients are Members of Racial and Ethnic Minority Groups (2016)



**8 million** are children

**83%** are uninsured or publicly insured

**92%** are low income


Health Center Patients are Predominantly Low Income (2016)



## Health Centers Reach the Nation's Most Vulnerable

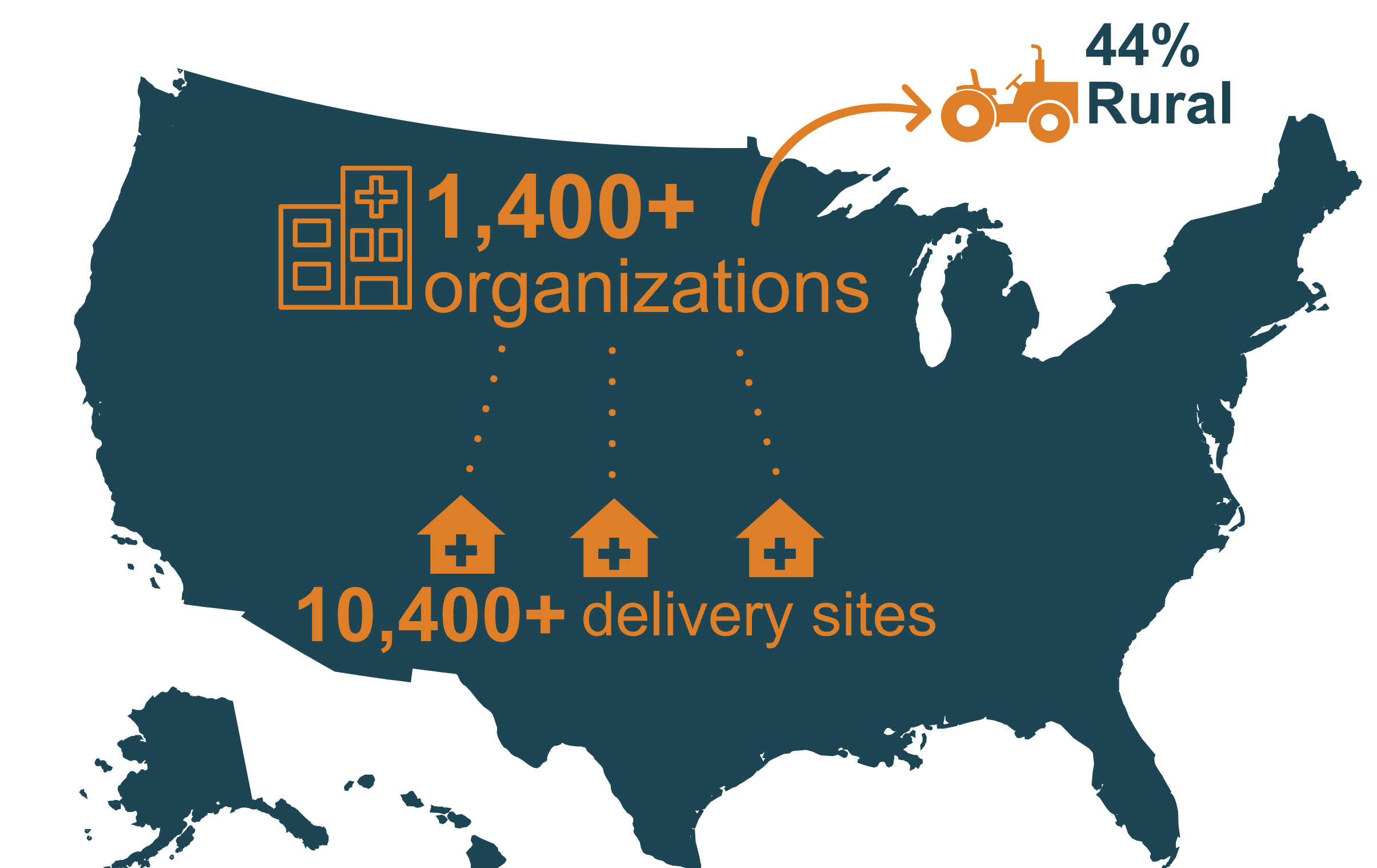
  
1 in 6 Medicaid beneficiaries

  
1 in 3 people below FPL

  
1 in 5 uninsured persons

## Where Do Health Centers Deliver Care?

Health centers have a presence in every US state and territory and the District of Columbia. They are located in high need areas identified by the federal government as having few physicians, higher than average infant mortality, and elevated poverty. This allows health centers to serve patients who even with insurance coverage would not have access to medical care otherwise.





# How Do Health Centers Serve Patients and Communities?

There Are Four Key Components That Define Health Centers and Allow Them to Reach America's Most Underserved Communities

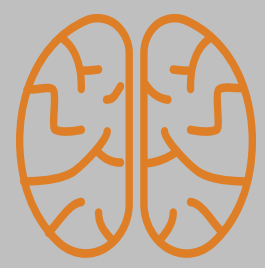
**1**  
Patient-majority governing boards

**2**  
Comprehensive set of services

**3**  
Open to all, regardless of insurance status or ability to pay

**4**  
Located in high need areas

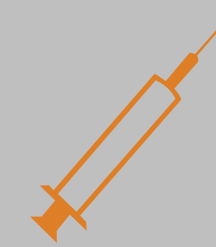
Health Centers employ nearly **208,000** people and provide a comprehensive set of services



behavioral health



chronic disease management



preventive services



enabling services

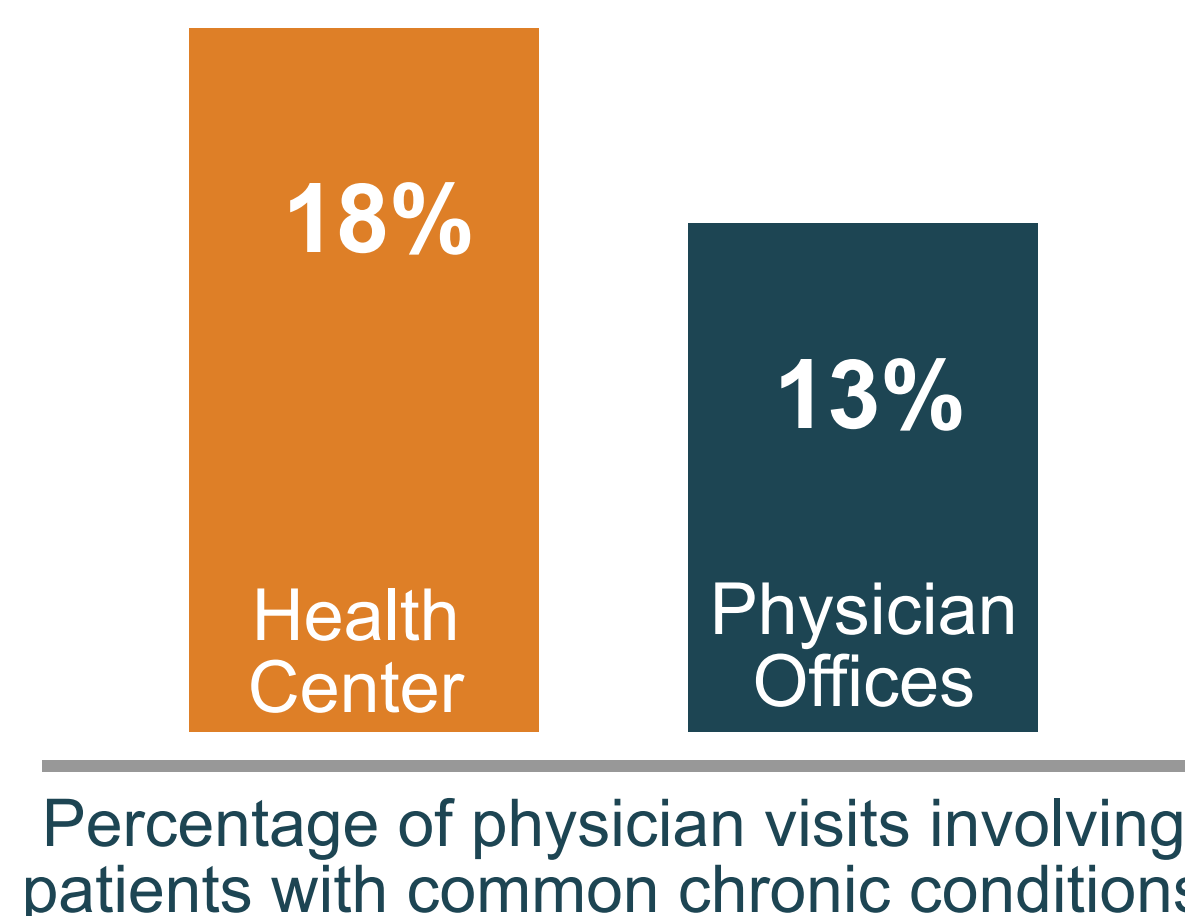


oral health

through more than **104 million** patient visits annually

## What Impact do Health Centers Have?

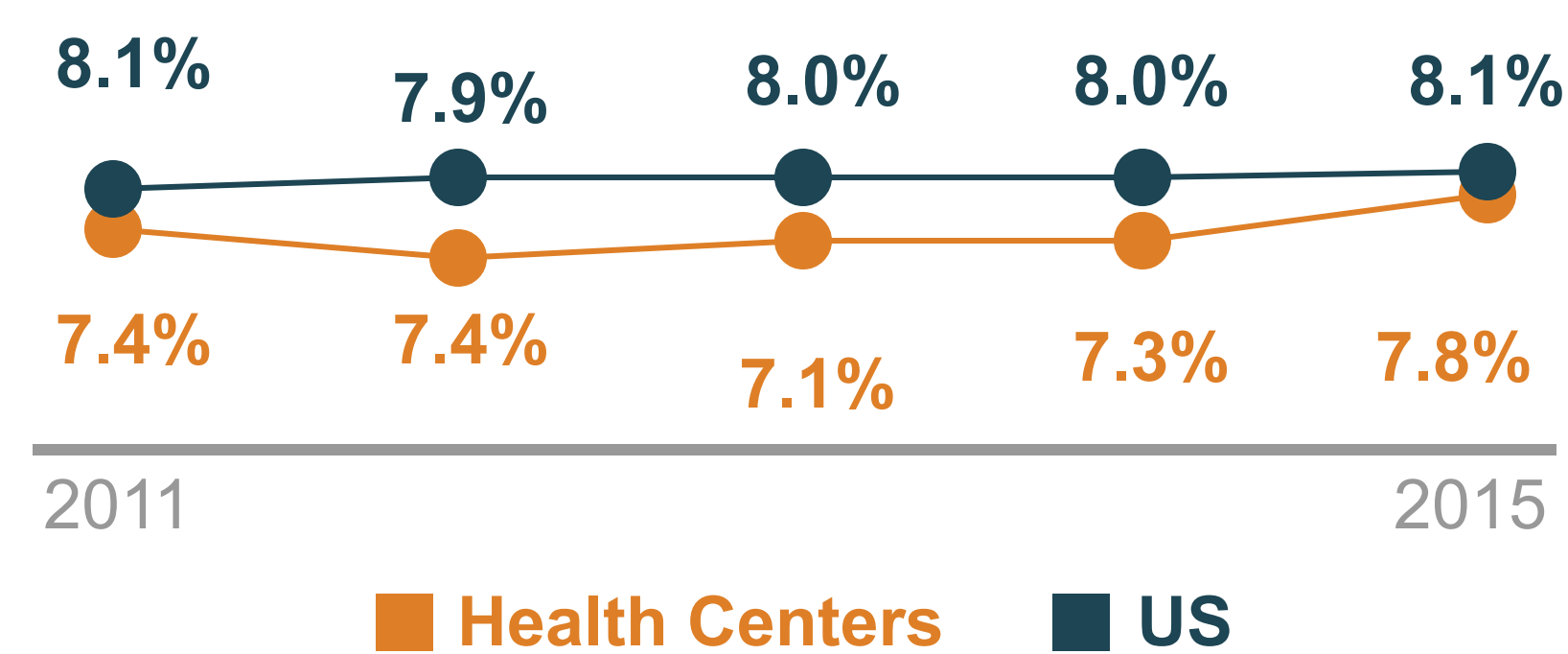
### Health Centers Serve More Patients with Chronic Conditions



### Health Centers Provide High Quality Care to All Patients

Health disparities are lower among health center patients than non-health center patients, and health centers perform better on ambulatory care quality measures than private practice physicians.

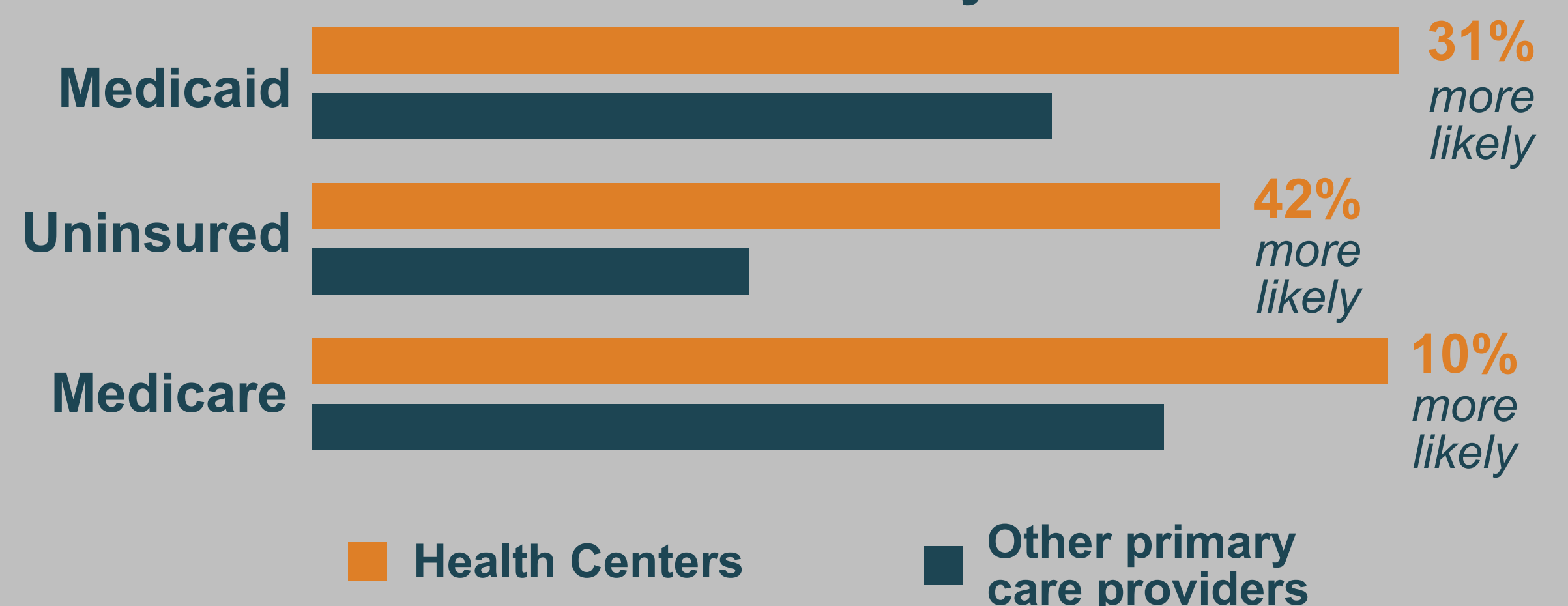
### Health Center Patients Have Lower Rates of Low Birth Weight



### Health Centers Increase Access to Care

Uninsured individuals living within close proximity of a health center are less likely to have an unmet medical need, and health center presence in a community is positively associated with uninsured, Medicaid, and privately insured patients having a usual source of care.

### Health Centers Are More Likely to Accept New Patients than Other Primary Care Providers



## Health Centers Create Savings and Promote Economic Growth

**\$45.6 billion**  
in total economic activity generated

**\$24 billion**  
in savings to the entire health care system

Health Centers Save, On Average, **\$2,371 Per Medicaid Patient** Compared to Other Providers

