

SUPERIOR ACCESS TO CONTACTSDIRECT



ContactsDirect.com/SuperiorVision

With ContactsDirect, Superior Vision members have the same seamless in-network experience when shopping for contact lenses online as they do when shopping in-person.

Easy Access to Contacts Online

- Choose from top brands
- Select from all types of contacts
- Apply in-network allowance instantly
- Use remaining FSA dollars
- Enjoy fast and free shipping

A Truly Superior Network

Answers High Demand for Online Contacts

- Superior Vision expanded the industry's largest, most diverse network to include industry-leading ContactsDirect

Increases Choice

- Members have the option to use their in-network benefit to purchase contacts online, in a provider's office or at a retail optical chain

Provides a Seamless Experience

- Superior technology allows members instantly apply their in-network allowance to their online purchase



Shop



Save



See Yourself
Healthy

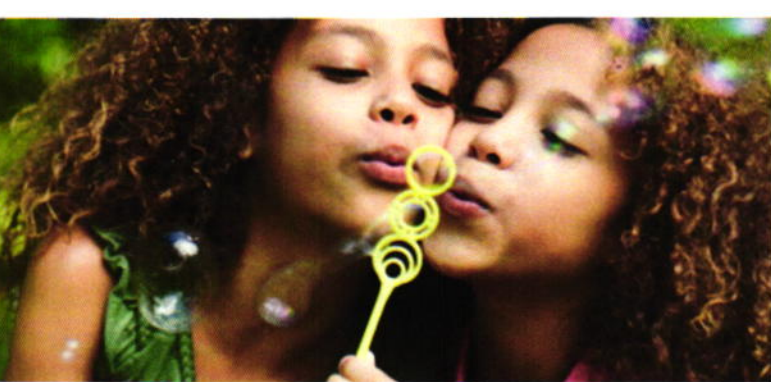
The Superior Vision Plan is underwritten by National Guardian Life Insurance Company. National Guardian Life Insurance Company is not affiliated with The Guardian Life Insurance Company of America, a/k/a The Guardian or Guardian Life.

SVS-SVBM-MKG16-0238v001 PDF 7/2016

ContactsDirect.com/SuperiorVision

SUPERIOR VISION 

Superior National FINDING IN-NETWORK PROVIDERS



It's Easy to Find a Superior Provider

Find an In-Network Provider Near You

- Go to SuperiorVision.com and click on Locate a Provider.
- On the next screen, enter your location information.
- Select **Insurance Through Your Employer** as your coverage type.
- A drop-down menu will appear. Select the **Superior National** network.
- Then, choose the distance for your search and click the Find Providers button.

A screenshot of the 'LOCATE A PROVIDER NEAR YOU' search form. The form includes fields for 'Location' (with a placeholder 'Enter Address or ZIP Code or City'), 'Coverage Type' (with a dropdown menu), and 'Distance' (with a dropdown menu set to '10 miles'). A green 'Find Providers' button is at the bottom. A red arrow points to this button. To the right, there is a 'Look Before You Go' section with a blue background and white text providing instructions and disclaimers.

Narrow Your Search Results

On the search results page, you can refine your search by:

- Practice name
- Provider name
- Selecting from a list of services

Once You've Selected a Superior Vision Provider

- Call your selected eye care provider prior to your appointment to verify provider network participation and to confirm services and acceptance of your vision plan.
- It's important to note that not all providers at each office or optical store location are in-network providers, nor do they participate in all networks.

A screenshot of the 'Refine Your Search' form. It includes two checkboxes: 'Practice Name:' with a text input field, and 'Provider Name:' with a text input field. Below this is a 'Services' section with two columns of checkboxes: 'Routine Vision Exam', 'Eyewear Dispensed', 'Contacts Dispensed', and 'Contact Lens Fitting' on the left; and 'Medical Vision Exam', 'Medical/Surgical', and 'Refractive Surgery' on the right.

You may also contact Customer Service at contactus@superiorvision.com or 800.507.3800 for assistance in locating an in-network provider.