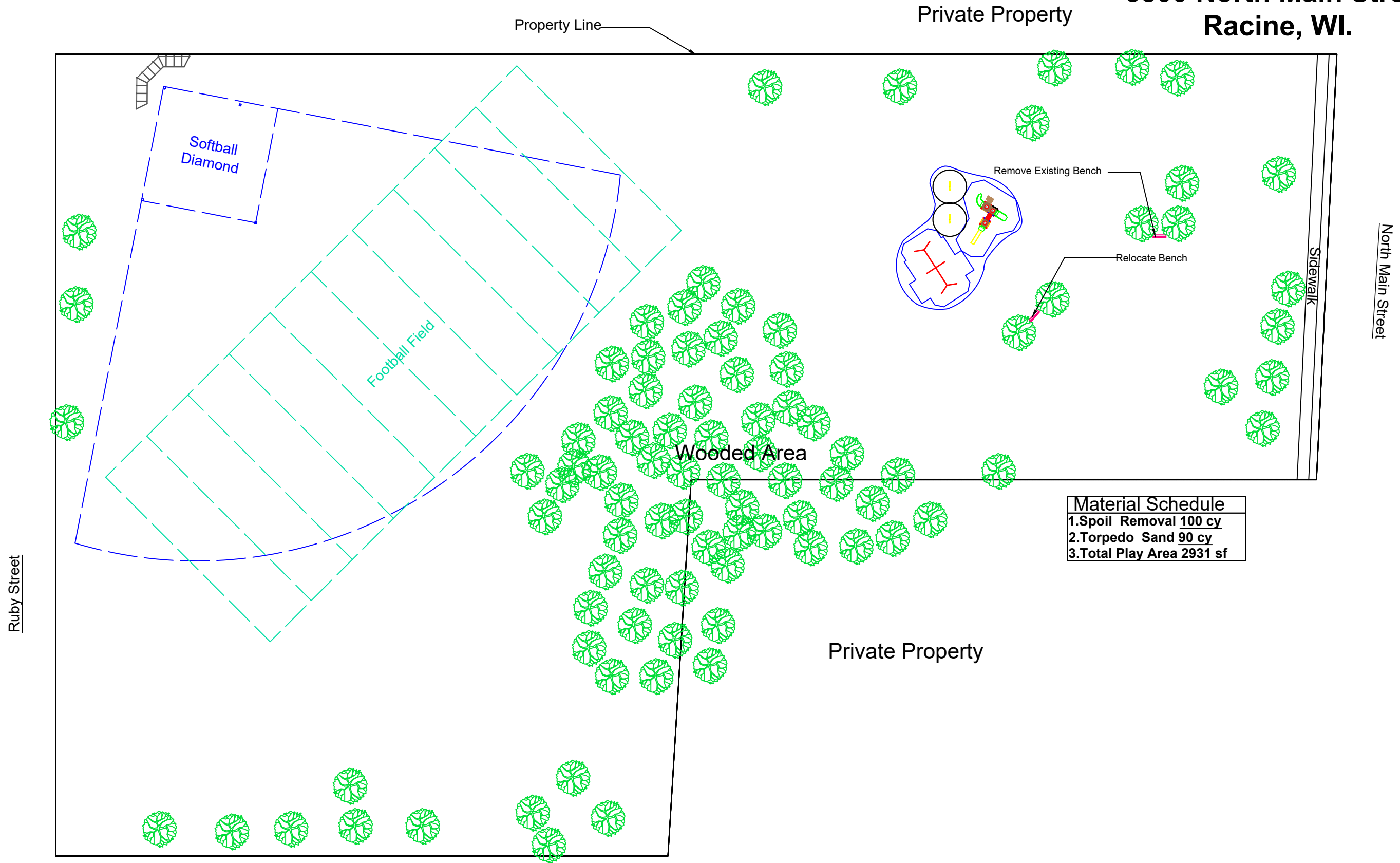
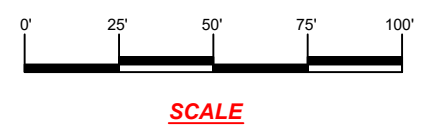



CARLSON PARK
3800 North Main Street
Racine, WI.



Material Schedule	
1. Spoil Removal	100 cy
2. Torpedo Sand	90 cy
3. Total Play Area	2931 sf



 <small>CITY OF RACINE DEPARTMENT OF PARKS, RECREATION AND CULTURAL SERVICES</small>	<small>CITY OF RACINE DEPARTMENT OF PARKS, RECREATION AND CULTURAL SERVICES</small>	
	Carlson Park Play Structure	Drawing Number: 24-2-
Drawn by: U. Ramos	Scale: As Shown	Date: July, 2009
Page 1 of 1		