

SOLBRAA PARK

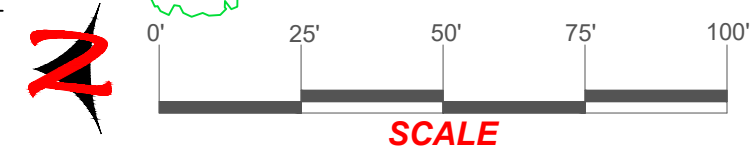
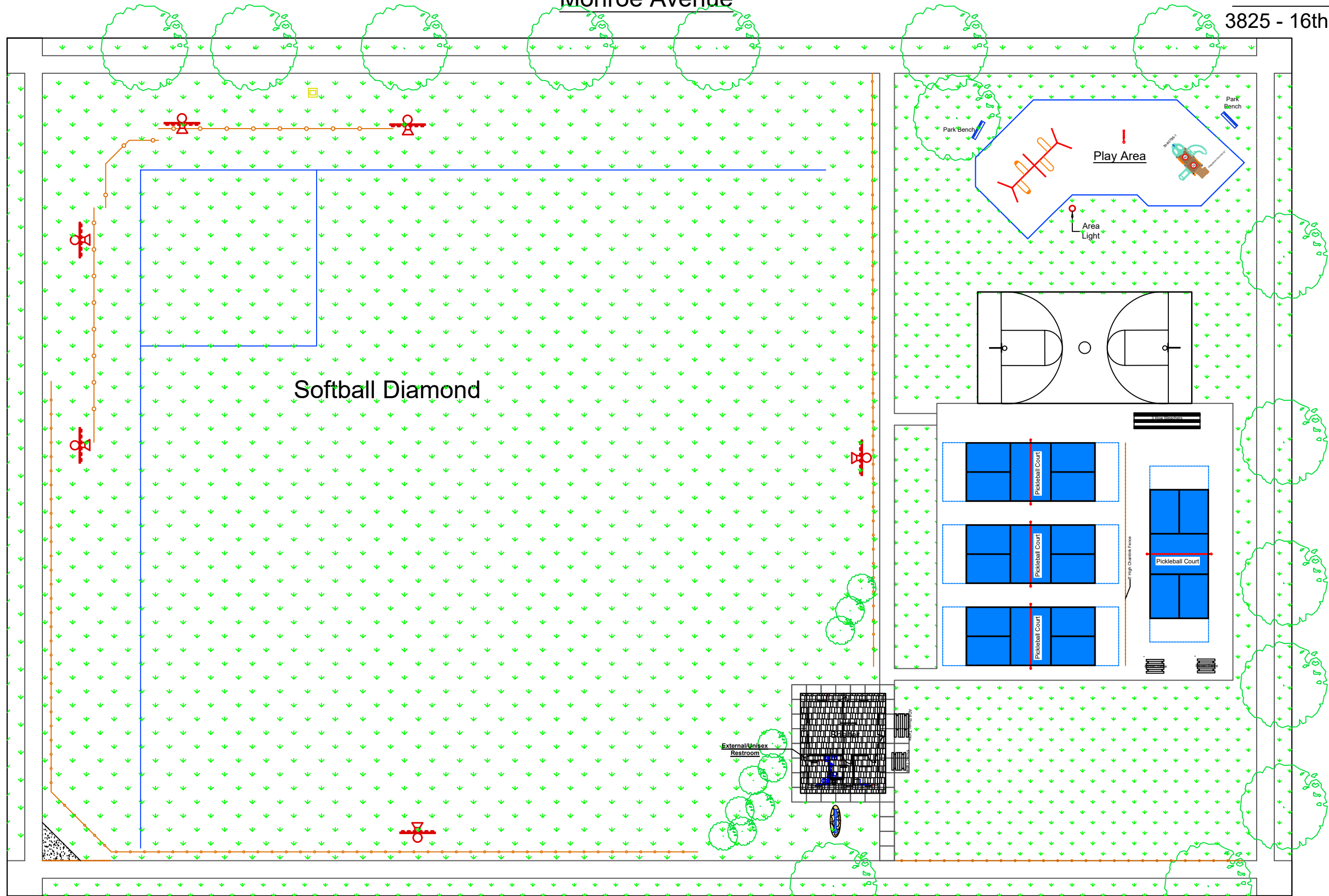
3825 - 16th Street; Racine, WI.


Monroe Avenue

16th Street

Victory Avenue

Lathrop Avenue



 CITY OF RACINE DEPARTMENT OF PARKS, RECREATION AND CULTURAL SERVICES	CITY OF RACINE DEPARTMENT OF PARKS, RECREATION AND CULTURAL SERVICES	
	SOLBRAA PARK Site Plan	Drawing Number: Schedule "A"
Drawn by: R. Rafel	Scale: As Shown	Date: April 2020
		Page 1 of 1