

2008



Kurt S. Wahlen, Chief of Police

A
N
N
U
A
L

R
E
P
O
R
T



Kurt S. Wahlen
Chief of Police

The year 2008 will be remembered as a year of change for the Racine Police Department. For many years, we have discussed and made plans to move the Records Section to the first floor of the Police Department in order to accommodate handicapped members of our community and to improve building security. This change, although sounding rather simplistic, was quite involved. Most of our enormous amount of paper records had to be converted to an electronic storage format. Furthermore, offices had to be shuffled and prepared for their new function. After moving the Records Section to the first floor, the Special Investigative Unit was brought up from the basement to the second floor. Traffic Investigations was moved to the basement and a number of other office moves and changes were implemented.

Besides changes to the building, there were a number of retirements among sworn and civilian personnel, necessitating promotions and the hiring of new personnel. Among the sworn personnel who retired were Deputy Chief Dean Stanton, Sergeant David Boldus, Investigators Robin Jacobsen, Doug Koykkari, William Chesen, Thomas Palmer, Mark Barrows, and Herbert Nikolai, Criminalists Michael Erdmann and James Yoghourtjian, Traffic Investigator Jerry Wadlington, and Patrolman Fred Radspinner. The Department thanks them for their service and wishes them the best in retirement.

Without our civilian work force, the Department would have little success in carrying out its mission. Mrs. Barbara Boldus and Mrs. Chela Bodi served as secretaries within the Investigative Division. Likewise, we thank them for their years of service and wish them well in their retirement. The Department also remembers Ms. Lisa Repka, a terrific Transcriber who passed away too early in life.

The statistical data within this annual report reflects that Part I Crimes, overall, decreased by 0.4 percent during 2008; however, *Violent Crime* increased 6.1% from the prior year. This increase is quite troublesome, especially in light of the fact that 10 people had their lives cut short from violent crime within our community. *Property Crime* dropped 1.2 % from previous year levels; however, there was a notable spike in burglaries. The economic downturn confronting our nation and other social problems likely contributed to the rise in this area. It is also important to point out that there was an improvement for investigative clearance rates for violent and property crime over the previous year. Furthermore, our city can celebrate a 9.8% decrease in traffic accidents.

The Police Department diligently seeks to address crime and disorder issues by establishing new relationships and building upon those critical to the success of our mission. We thank our civic leaders, Neighborhood Watch, Crime Stoppers, social organizations, churches, and the citizens of this community for their support of the Police Department and their willingness to address crime and other social issues.

Relationship building is fundamental to the Community Policing Philosophy; and over the years, adherence to the Community Policing (COP) philosophy has stabilized and improved neighborhoods within our city. In 2008, the Department was able to close the COP house at 10th Street and Davis Place and open a new house at 12th Street and Villa Street – an area that needed our attention. We are looking forward to positive changes in the future for the St. Catherine's school area with the Thelma Orr house as a catalyst for these changes.

Several new innovative technologies were introduced this past year to make our crime fighting efforts more efficient. Digital cameras were set up in specific areas within the city to help reduce crime. A "tip texting" system was added to enhance the ability of people to provide information on crime to police. Squad cars were equipped with GPS software that allows dispatchers to view unit locations on a computerized map to enhance efficient dispatching of patrol resources. Improvements in technology are, no doubt, helpful; but our success will always be dependent on the support the Department receives from the community.

As Chief of Police, I would like to close by thanking the men and women of the Racine Police Department who risk their personal safety each day as they serve the citizens of our community. It should be noted that many members of our department not only serve the community during their working hours, but also serve during their personal time. They are active community leaders, serve on non-profit community boards, volunteer with service clubs, provide church leadership, and give time to volunteer organizations. I look forward to working with all the members of the Racine Police Department in 2009, as we continue to make Racine an even better place to live.

Kurt

Command Staff



Steven Hurley
Assistant Chief



David Smetana
Deputy Chief
Patrol



Arthel Howell
Deputy Chief
Investigations



Thomas Christensen
Deputy Chief
Support Services

Shift/Unit Commanders



Raymond Knapp
Lieutenant
Investigations



Michael Polzin
Lieutenant
1st Shift Patrol



James Dobbs
Lieutenant
Planning



Robert Purdy
Lieutenant
SIU



Carlos López
Lieutenant
2nd Shift Patrol



Jerry Baldukas
Lieutenant
Training



Mark Schulz
Lieutenant
Communications



Aldred Days
Lieutenant
3rd Shift Patrol



John Polzin
Lieutenant
Internal Affairs

Gary Becker Mayor of Racine



Board of Police and Fire Commissioners

Marie Black
Charles Johnson
Keith Rogers
Chuck Tyler
Van Wanggaard

Board of Aldermen

- | | |
|----------------------|-------------------------|
| 1 Jeff Coe | 8 Q. A. Shakoor II |
| 2 Robert L. Anderson | 9 Terrance McCarthy |
| 3 Michael Shields | 10 Thomas Friedel |
| 4 Jim Kaplan | 11 Gregory T. Holding |
| 5 David L. Maack | 12 Aron Wisenski |
| 6 Sandy J. Weidner | 13 James T. Spangenberg |
| 7 Raymond DeHahn | 14 Ronald D. Hart |
| 15 Robert Mozol | |



Retirements and Promotions

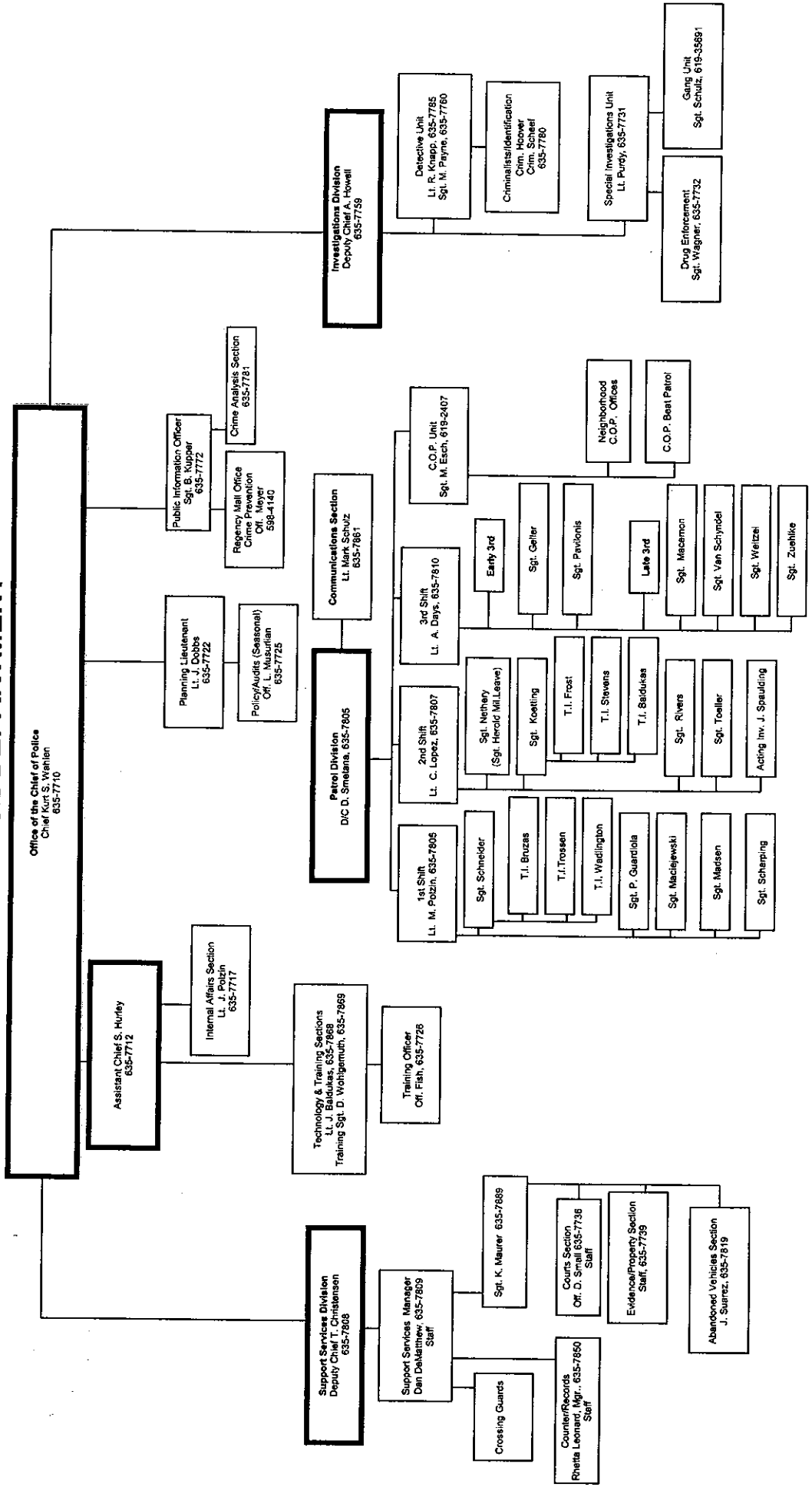
Retirements

Mark Barrows	Herbert Nikolai
David Boldus	Thomas Palmer
William Chesen	Frederik Radspinner
Michael Erdmann	Dean Stanton
Robin Jacobsen	Jerry Wadlington
Douglas Koykkari	James Yoghourtjian

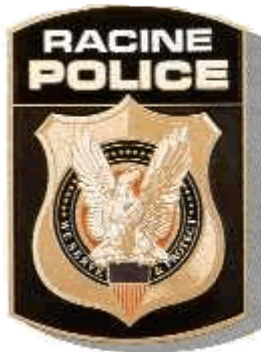
Promotions

Gregory Baldukas to Traffic Investigator
Jorge Garcia to Investigator
Kevin Klinkhammer to Investigator
Donald Nuttall Jr to Investigator
Jon Principe to Investigator
Tonya Scarvers to Investigator
John Spaulding to Investigator
Michael Vanko to Investigator
Brian Neubauer to Acting Sergeant
Mark Esch to Acting Lieutenant
David Smetana to Deputy Chief

RACINE POLICE DEPARTMENT



December 31, 2008



2008 STATISTICAL SUMMARY

Crime Statistics Provided by:
John J. Mudrak

Software Coordinator Administrative Assistant
Racine Police Department

Traffic Statistics Provided by:
Sawyer DeMint
Patrol Division Secretary
Racine Police Department

Photo Credits:
Mike Erdmann – Racine Police Department (Retired)
Randy Scheef – Racine Police Department
James Yoghourtjian – Racine Police Department (Retired)

Cover Design:
James Yoghourtjian – Racine Police Department (Retired)



Part One Crimes Reported & Part One Crimes Clearance Rate

Violent Crimes Reported

	2008	2007	2006	2005	2004	2008 vs. 2007
Homicides	10	7	7	16	5	+ 42.9%
Rapes	18	30	15	31	20	- 40%
Robbery	293	281	245	241	228	+ 4.3%
Aggravated Assaults	220	192	207	102	94	+14.6%
Total Violent Crimes	541	510	474	390	347	+6.1%

Property Crimes Reported

	2008	2007	2006	2005	2004	2008 vs. 2007
Burglary	1,299	945	1,113	983	1,016	+ 37.5%
Theft	2,431	2,766	3,116	3,235	3,159	- 12.1%
Motor Vehicle Theft	200	267	365	340	383	- 25.1%
Arson	27	27	26	26	22	No Change
Total Property Crimes	3,957	4,005	4,620	4,584	4,580	- 1.2%
Total Part 1-Crimes	4,498	4,515	5,094	4,974	4,927	- 0.4%

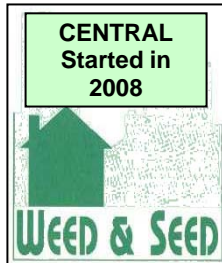
Violent Crime Clearances

	2008 Cases Cleared	2008 Clearance Rate	2007 Cases Cleared	2007 Clearance Rate
Homicides	6	60%	3	42.9%
Rapes	6	33.3%	17	56.7%
Robbery	105	35.8%	68	24.2%
Aggravated Assaults	139	63.2%	115	59.9%
Total Violent Crimes	256	47.3%	203	39.8%

Property Crime Clearances

	2008 Cases Cleared	2008 Clearance Rate	2007 Cases Cleared	2007 Clearance Rate
Burglary	216	16.7%	86	9.1%
Theft	620	25.5%	601	21.6%
Motor Vehicle Theft	60	30%	51	19.1%
Arson	4	14.8%	7	25.9%
Total Property Crimes	900	22.7%	745	18.6%
Total Part 1-Clearances	1156	25.7%	948	21%

Racine Police Department
Community Policing
Crime Statistics
For The Years 2000-2008





West Sixth Street COP House
Includes
Squad Area 07- Grids (O) & (Q)

Established: February, 1995



<u>Violent Crime</u>				<u>2008 vs 2007</u>									
<u>Totals</u>				<u>2008</u>	<u>2007</u>	<u>Percent of Change</u>	<u>2006</u>	<u>2005</u>	<u>2004</u>	<u>2003</u>	<u>2002</u>	<u>2001</u>	<u>2000</u>
<u>CFS-TYPE</u>	<u>2008</u>	<u>2007</u>	<u>Percent of Change</u>	<u>2006</u>	<u>2005</u>	<u>2004</u>	<u>2003</u>	<u>2002</u>	<u>2001</u>	<u>2000</u>	<u>2000</u>	<u>2000</u>	<u>2000</u>
Homicides	0	0	0.00%	0	0	1	0	0	0	0	0	0	0
Rapes	2	1	100.00%	0	6	2	2	2	0	1	1	1	1
Robbery	15	12	25.00%	8	1	10	8	12	11	15	15	15	15
Aggravated Assaults	3	9	-66.67%	13	25	4	1	12	18	22	22	22	22
Violent Crime Totals	20	22	-9.09%	21	32	17	11	26	29	38	38	38	38
<u>Property Crime</u>				<u>2008 vs 2007</u>									
<u>Totals</u>				<u>2008</u>	<u>2007</u>	<u>Percent of Change</u>	<u>2006</u>	<u>2005</u>	<u>2004</u>	<u>2003</u>	<u>2002</u>	<u>2001</u>	<u>2000</u>
<u>CFS-TYPE</u>	<u>2008</u>	<u>2007</u>	<u>Percent of Change</u>	<u>2006</u>	<u>2005</u>	<u>2004</u>	<u>2003</u>	<u>2002</u>	<u>2001</u>	<u>2000</u>	<u>2000</u>	<u>2000</u>	<u>2000</u>
Burglary	34	41	-17.07%	41	25	43	29	42	51	60	60	60	60
Theft	106	109	-2.75%	109	83	86	92	93	143	103	103	103	103
Auto-Theft	14	14	0.00%	14	19	31	10	17	27	34	34	34	34
Arson	0	0	300.00%	0	1	3	2	3	2	1	1	1	1
Property Crimes Totals	154	164	-6.10%	164	128	163	133	155	223	198	198	198	198
Part One Crime Totals	174	186	-6.45%	185	160	180	144	181	252	236	236	236	236
<u>Miscellaneous</u>				<u>2008 vs 2007</u>									
<u>Calls</u>				<u>2008</u>	<u>2007</u>	<u>Percent of Change</u>	<u>2006</u>	<u>2005</u>	<u>2004</u>	<u>2003</u>	<u>2002</u>	<u>2001</u>	<u>2000</u>
<u>CFS-TYPE</u>	<u>2008</u>	<u>2007</u>	<u>Percent of Change</u>	<u>2006</u>	<u>2005</u>	<u>2004</u>	<u>2003</u>	<u>2002</u>	<u>2001</u>	<u>2000</u>	<u>2000</u>	<u>2000</u>	<u>2000</u>
Simple Assaults	53	50	6.00%	51	59	59	73	89	92	70	70	70	70
Weapons Violations	75	51	47.06%	66	57	72	31	39	58	64	64	64	64
Disturbances	682	639	6.73%	614	645	676	742	720	859	881	881	881	881
Police Service Requested	149	200	-25.50%	211	205	275	263	259	384	412	412	412	412
Total Calls Reported	3175	3225	-1.55%	3188	3342	3587	3568	3757	4310	4548	4548	4548	4548



Geneva & ML-King St. COP House
Includes
Squad Area 02- Grids (U) & (X)
Squad Area- 03 Grid (Q)



Geneva St - Established: December, 1997
ML-King Dr- Established: May, 1994

<u>Violent Crime Totals</u>	<u>2008 vs 2007</u>			<u>2006</u>	<u>2005</u>	<u>2004</u>	<u>2003</u>	<u>2002</u>	<u>2001</u>	<u>2000</u>
	<u>2008</u>	<u>2007</u>	<u>Percent of Change</u>							
<u>CFS-TYPE</u>										
Homicides	0	0	-100.00%	1	0	0	0	0	1	0
Rapes	0	1	100.00%	0	0	1	3	1	1	2
Robbery	13	11	18.18%	8	13	7	14	8	20	19
Aggravated Assaults	0	8	-100.00%	10	6	6	4	9	19	30
<u>Violent Crime Totals</u>	13	20	-35.00%	19	19	14	21	18	41	51

<u>Property Crime Totals</u>	<u>2008 vs 2007</u>			<u>2006</u>	<u>2005</u>	<u>2004</u>	<u>2003</u>	<u>2002</u>	<u>2001</u>	<u>2000</u>
	<u>2008</u>	<u>2007</u>	<u>Percent of Change</u>							
<u>CFS-TYPE</u>										
Burglary	38	21	80.95%	27	43	34	30	29	40	41
Theft	42	42	0.00%	59	84	62	71	62	46	64
Auto-Theft	57	6	850.00%	8	13	20	28	19	14	19
Arson	4	1	100.00%	0	0	1	1	3	1	1
<u>Property Crimes Totals</u>	141	70	101.43%	94	140	117	130	113	101	125
<u>Part One Crime Totals</u>	154	90	71.11%	113	159	131	151	131	142	176

<u>Miscellaneous Calls</u>	<u>2008 vs 2007</u>			<u>2006</u>	<u>2005</u>	<u>2004</u>	<u>2003</u>	<u>2002</u>	<u>2001</u>	<u>2000</u>
	<u>2008</u>	<u>2007</u>	<u>Percent of Change</u>							
<u>CFS-TYPE</u>										
Simple Assaults	50	45	11.11%	48	51	76	58	75	87	38
Weapons Violations	49	50	-2.00%	55	43	34	38	51	54	45
Disturbances	481	426	12.91%	542	516	528	511	634	614	588
Police Service Requested	181	183	-1.09%	198	194	196	167	241	271	322
<u>Total Calls Reported</u>	2717	2988	-9.07%	3189	2921	3036	3382	3909	4067	3786



**Mead Street COP House
Includes
Squad Area 05- Grid (R)**

Established: July, 1996



Violent Crime Totals CFS-TYPE	2008 vs 2007			2006	2005	2004	2003	2002	2001	2000
	2008	2007	Percent of Change							
Homicides	0	0	0.00%	1	1	0	0	0	0	0
Rapes	1	0	100.00%	1	2	0	0	0	1	0
Robbery	6	15	-60.00%	7	3	6	4	5	7	5
Aggravated Assaults	1	0	100.00%	5	1	3	8	4	6	6
Violent Crime Totals	8	15	-46.67%	14	7	9	12	9	14	11

Property Crime Totals CFS-TYPE	2008 vs 2007			2006	2005	2004	2003	2002	2001	2000
	2008	2007	Percent of Change							
Burglary	27	33	-18.18%	26	19	24	16	18	26	26
Theft	42	26	61.54%	44	42	35	29	37	53	50
Auto-Theft	6	4	50.00%	6	9	12	11	11	15	16
Arson	3	0	300.00%	1	0	0	1	2	2	2
Property Crimes Totals	78	63	23.81%	77	70	71	57	68	96	94
Part One Crime Totals	86	78	10.26%	91	77	80	69	78	110	105

Miscellaneous Calls CFS-TYPE	2008 vs 2007			2006	2005	2004	2003	2002	2001	2000
	2008	2007	Percent of Change							
Simple Assaults	32	17	88.24%	26	28	35	52	52	43	37
Weapons Violation	33	45	-26.67%	53	29	30	51	24	38	64
Disturbances	285	262	8.78%	313	327	349	338	379	450	364
Police Service Requested	52	60	-13.33%	97	103	119	115	149	172	200
Total Calls Reported	1360	1356	0.29%	1773	1738	1926	2058	2038	2372	2146



Davis & Villa St. COP House
Includes
Squad Area 04- Grids (P) & (Q) &
(S) & (T)



Davis St- Established: December, 1999
Original Villa St- Established: June, 1994
Current Villa St- Established: July, 2008

<u>Violent Crime Totals</u>	<u>2008 Vs 2007</u>			<u>2006</u>	<u>2005</u>	<u>2004</u>	<u>2003</u>	<u>2002</u>	<u>2001</u>	<u>2000</u>
	<u>2008</u>	<u>2007</u>	<u>Percent of Change</u>							
<u>CFS-TYPE</u>										
<u>Homicides</u>	2	2	0.00%	1	4	1	1	0	1	1
<u>Rapes</u>	2	2	0.00%	2	1	0	0	6	4	0
<u>Robbery</u>	25	32	-21.88%	16	16	22	15	18	21	22
<u>Aggravated Assaults</u>	3	16	-81.25%	11	7	7	8	18	31	36
<u>Violent Crime Totals</u>	32	52	-38.46%	30	28	30	24	42	57	59

<u>Property Crime Totals</u>	<u>2008 Vs 2007</u>			<u>2006</u>	<u>2005</u>	<u>2004</u>	<u>2003</u>	<u>2002</u>	<u>2001</u>	<u>2000</u>
	<u>2008</u>	<u>2007</u>	<u>Percent of Change</u>							
<u>CFS-TYPE</u>										
<u>Burglary</u>	60	61	-1.64%	80	61	67	80	68	80	86
<u>Theft</u>	183	172	6.40%	240	227	220	198	236	235	201
<u>Auto-Theft</u>	28	30	-6.67%	32	37	28	33	13	41	36
<u>Arson</u>	0	1	-100.00%	3	2	3	3	1	0	1
<u>Property Crimes Totals</u>	271	264	2.65%	355	327	318	314	318	356	324
<u>Part One Crime Totals</u>	303	316	-4.11%	385	355	348	338	360	413	383

<u>Miscellaneous Calls</u>	<u>2008 Vs 2007</u>			<u>2006</u>	<u>2005</u>	<u>2004</u>	<u>2003</u>	<u>2002</u>	<u>2001</u>	<u>2000</u>
	<u>2008</u>	<u>2007</u>	<u>Percent of Change</u>							
<u>CFS-TYPE</u>										
<u>Simple Assaults</u>	105	80	31.25%	95	109	119	135	114	140	73
<u>Weapons Violation</u>	67	1	6600.00%	110	100	84	57	50	76	76
<u>Disturbances</u>	1279	1405	-8.97%	1413	1510	1515	1480	1274	1399	1304
<u>Police Service Requested</u>	559	575	-2.78%	657	766	793	906	1126	1184	1126
<u>Total Calls Reported</u>	6645	7745	-14.20%	7905	8127	8451	8436	8514	8313	7591



Motor Vehicle Crashes

	2008	2007	2008 vs. 2007
Fatal Crashes	2	3	-33%
Injury Crashes	573	712	-19.5%
Property Damage Crashes Under \$1000	856	952	-10%
Property Damage Crashes Over \$1000	1440	1517	-5%
Crashes Classified as Hit & Run*	885*	930*	-4.8%
Total Traffic Crashes	2871	3184	-9.8%

* Hit and run crashes are listed separately; however, they are already included in the four above listed categories.

City Of Racine Municipal Violations (UMCC) for the Year 2008

CITY ORDINANCE	ORD. NUMBER	JAN	FEB	MAR	APR	MAY	JUNE	JULY	AUG	SEPT	OCT	NOV	DEC	TOTAL
All Alcohol Beverage Violations	[6-2 - 6-58]	15	23	29	32	22	33	43	71	37	26	38	14	383
All other Liquor Violations	[6-82- 6-167]	0	0	0	0	0	0	1	0	0	0	2	0	3
Entertainment Violations	[6-194 -a-c]	0	0	0	0	0	0	1	0	0	0	0	0	1
Animal License Violations	[10-36 - 10-40]	2	3	6	6	7	9	12	8	16	7	7	8	91
Animal Care/Control Viol.	[10-61 - 10-72]	0	4	3	8	6	2	12	11	8	5	3	0	62
Animal Rabies/Vaccination Viol.	[10-96-10-102]	3	2	3	2	6	5	7	1	17	4	0	2	52
Building Code Violation	[18-27 - 18-813]	0	0	0	0	0	0	0	0	0	0	0	0	0
Business,Occup,Profess. Licenses	[22-26 - 22-1192]	0	0	2	0	0	0	6	0	0	0	1	0	9
Cemetery Violations	[30-001 - 30-124]	0	0	0	0	0	0	0	0	3	2	0	2	7
Audible Alarms Violations	[38-036 - 38- 039]	0	0	0	0	0	0	0	0	0	0	0	0	0
Envrment Viol - Nulsances Viol.	[42-01 - 42-36]	2	0	0	1	0	0	3	0	0	0	0	0	6
Enviroment Viol - Weed control Viol.	[42-56 - 42-62]	0	0	0	0	0	0	0	0	0	0	0	0	0
Enviroment Viol - All other Violations	[42-86 - 42-88]	0	0	0	0	0	0	0	0	0	0	0	0	0
Unreasonable Amplification -	[42-128 - 42-144]	0	0	5	5	7	5	10	21	16	5	0	4	78
Fire Prevention /Protection Viol.	[50-1 - 50-269]	0	4	3	1	2	3	0	1	2	5	1	4	26
Abandoned Refrigerator/Icebox violator	[66-001]	0	0	0	0	0	0	0	0	0	0	0	0	0
Disorderly Conduct	[66-31 - 66-34]	70	71	64	84	68	48	62	62	76	99	60	41	805
Harassing Phone Calls	[66-033]	0	0	0	0	0	0	0	2	0	0	2	1	5
Weapons Violations	[66-57 - 66-60]	0	3	3	1	1	2	3	7	3	1	1	1	26
Obstruction of Public Ways	[66-107 - 66-135]	10	13	2	7	24	30	22	19	32	26	0	4	189
Trespassing Violations	[66-136 - 66-137]	15	13	17	27	25	18	21	20	23	18	10	15	222
Resisting Arrest	[66-162]	23	14	12	9	22	17	7	23	15	11	26	17	196
Failure to aid Law Enforcement	[66-161 - 66-164]	0	0	2	1	0	0	0	0	0	0	0	0	3
Obstructing	[66-165]	0	0	0	0	0	0	0	0	0	0	2	0	2
Vandalism Violations	[66-186 - 66-196]	0	0	2	4	0	5	5	6	5	1	2	1	31
Theft	[66-211 - 66-228]	12	11	11	20	10	11	13	7	9	14	19	15	152
Possession Marijuana	[66-261]	0	0	1	2	4	1	6	1	3	7	0	3	28
Possession Drug Paraphernalia	[66-271]	0	0	0	0	0	0	0	0	0	0	0	0	0
Gambling Violations	[66-296 - 66-299]	0	0	0	0	0	0	0	0	0	0	0	0	0
Prostitution Violations	[66-321 - 66-322]	0	0	3	0	0	0	0	0	0	0	0	0	3
Disorderly House -	[66-347]	16	1	0	2	2	0	0	10	1	0	0	0	32
Littering -	[66-371 - 66-372]	0	2	6	3	7	2	2	5	7	2	3	2	41
Curfew - Minor	[66-396]	14	22	30	23	39	30	36	113	37	25	16	24	409
Curfew - Parent	[66-397]	0	1	1	1	2	2	1	4	1	2	0	1	16
Picketing Violations	[66-422 - 66-423]	0	0	0	0	0	0	0	0	0	0	0	0	0
Fraud - Violations	[66-456 - 66-490]	0	0	0	1	0	0	0	0	0	0	0	0	1
Fire Work Violations	[66-516]	0	0	0	2	1	1	17	1	0	0	0	0	22
Skate Board Violations	[66-542]	0	0	0	0	0	0	0	0	0	0	0	0	0
Worthless Checks	[66-566]	0	0	0	0	0	0	0	0	0	0	0	0	0
911- Non-Emergency Use	[66-592]	1	1	8	4	3	3	2	2	0	1	1	5	31
Tobacco Products Poss. By Minor	[66-647]	8	10	21	37	26	1	8	9	37	18	12	18	205
Sale of Tobacco Products to Minor	[66-667]	0	0	0	0	5	9	8	0	11	0	1	6	40
Truancy	[66-802,803-806]	100	91	128	116	131	35	0	0	221	115	101	120	1158
Park Violations	[70-76 - 70-132]	1	0	0	4	1	10	14	0	5	3	0	0	38
Snow on SideWalk	[82-109]	0	0	0	0	0	0	0	0	0	0	0	0	0
Solid Waste Violations	[78-2 - 78-117]	0	0	0	0	0	1	3	0	2	1	0	0	7
ALL OTHER VIOLATIONS		1	16	24	0	4	5	3	6	4	0	26	2	91
2008		293	305	386	403	425	288	328	410	591	398	334	310	4,471
2007		450	378	555	441	630	529	335	325	717	529	377	190	5,456
Percent of Change are not available		-34.9%	-19.3%	-30.5%	-8.6%	-32.5%	-45.6%	-2.1%	26.2%	-17.6%	-24.8%	-11.4%	63.2%	-18.1%

NOTE: THE YELLOW HIGHLIGHTED ARE CITY ORDINANCES THAT ARE USUALLY ISSUED BY OTHER CITY DEPARTMENTS



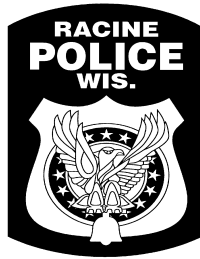
UNIFORM TRAFFIC CITATIONS (UTC) YEAR 2008

**TYPE OF VIOLATION	1st Shift	2nd Shift	Early 3rd Shift	3rd Shift	2008 Totals	2007 Totals	Percent of Change
Registration of Vehicle Violations	513	1316	264	371	2464	2567	-4.0%
Operators License Violations	668	1597	379	495	3139	3550	-11.6%
Improper Lane Usage	151	184	38	35	408	569	-28.3%
Right Of Way- (FYRW)	163	196	27	16	402	493	-18.5%
Right Of Way-Pedestrian (FYRW)	5	18	2	2	27	38	-28.9%
Turning & Stopping Violations	189	204	74	90	557	527	5.7%
Required Stops Violations	103	145	67	38	353	420	-16.0%
Restrictions on Stopping&Parking	2	20	9	3	34	108	-68.5%
Speeding Violations	428	299	107	83	917	1216	-24.6%
Reckless Driving	11	23	9	7	50	98	-49.0%
O.V.W.I - Violations	42	96	44	55	237	220	7.7%
Accident & Accident Report Viol	80	79	29	36	224	254	-11.8%
ALL OTHER VIOLATION	155	218	67	81	521	583	-10.6%
Radio Amplification Violations	16	103	34	12	165	323	-48.9%
SeatBelt Violations	187	365	218	305	1075	1230	-12.6%
Equipment Violations	322	291	374	357	1344	1481	-9.3%
2008 Totals	3,035	5,154	1,742	1986	11,917	13,677	-12.9%
2007 Totals	2,650	6,877	1,960	2190	13,677		
PERCENT OF CHANGE	14.5%	-25.1%	-11.1%	-9.3%			



Officer Issued Parking Enforcement

TYPE OF VIOLATIONS	2008	2007	% Change
Meter Violations	41	20	105.00%
Overtime Parking	26	54	-51.85%
No Parking Area	548	769	-28.74%
Loading Zone Violations	4	9	-55.56%
Street Storage	15,565	18,880	-17.56%
Parking Prohibited	1,038	943	10.07%
Restricted Parking	213	217	-1.84%
Improper Parking	1,203	840	43.21%
Abandoned Vehicles	1,293	1,106	16.91%
Winter/Snow Violation	398	6	6533.33%
School Zone Violations	729	802	-9.10%
Tow Away Zone	0	237	-100.00%
Misc. Violations	1,061	1,158	-8.38%
***** TOTALS *****	22,119	25,041	-11.67%



Racine Police Department
730 Center Street
Racine, Wisconsin 53403
262-635-7700

All questions or comments regarding this report should be directed to Sergeant Bernard Kupper, Public Information Officer (262) 635-7772.